

HOW TO PROVIDE A PLOT FILE


Setting up the printer in Autocad 2005/2006

1. Launch AutoCAD 2005/2006
2. In the menu, choose **FILE**.
3. Choose the **PLOTTER MANAGER** option.
4. Double click on the **ADD-A-PLOTTER WIZARD**.
5. Follow the instructions on the screen.
6. Click on **NEXT**.
7. Select **MY COMPUTER** to install the driver on your local PC.
8. Click on **NEXT**.
9. Select **OCE** in the list of manufacturers.
10. Select the printer model you want to install - **9400 LV.4x**
11. Click on **NEXT**.
12. Click on **NEXT** again.
13. Select the printer port - **PLOT TO FILE**.
14. Click on **NEXT**.
15. Click on **NEXT** again.
16. Click on **EDIT PLOTTER CONFIGURATION**
17. In the main window click on **CUSTOM PROPERTIES**.
18. Under ACCESS CUSTOM DIALOGUE, click on **CUSTOM PROPERTIES**.
19. On NUMBER OF ROLLS click on **2**.
20. Click **OK**. The custom settings widow pops up.
21. Click on **CUTTING METHOD <plot size>**. Change it to **STANDARD SIZE**.
22. Click **OK**.
23. Click **OK**.
24. You are back at the Add-a-Plotter window. Click on **FINISH**.

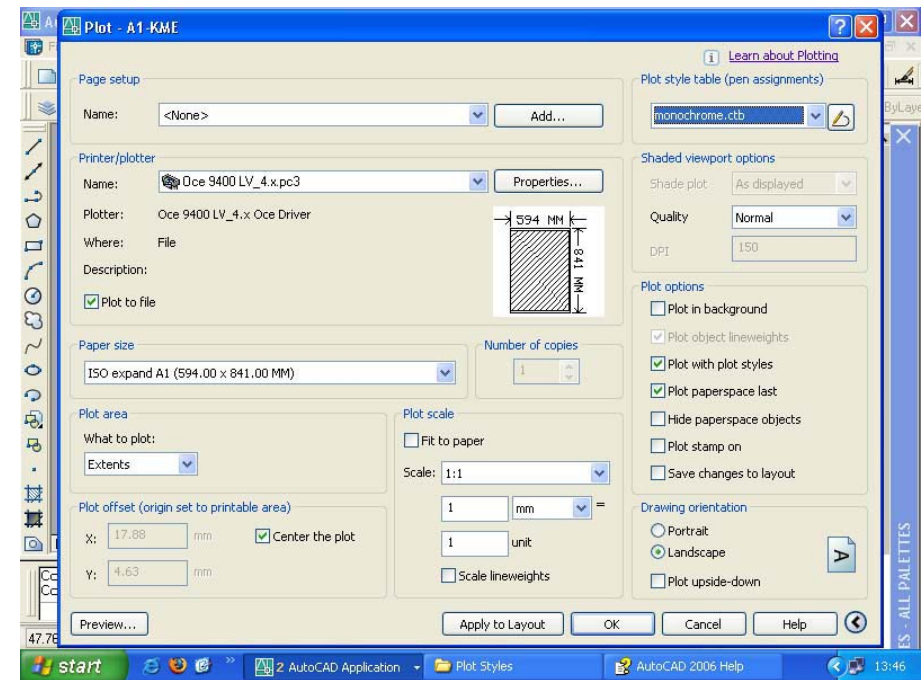
The Plotter is now installed.

Continued Overleaf to create the plot file.

Producing the PLT file in Autocad 2005/2006.

1. Click on **FILE**.
2. Click on **PLOT**.
3. Select **Oce 9400 LV_4.x.pc3** as the plot device.
4. Check / select Paper Size.
5. Check / select Plot Area.
6. Check / select Plot Scale.
7. Click on  to show extended plot options if not already visible.
6. Under Plot style table (pen assignments) select **monochrome.ctb**.
7. Check / select **Centre the plot**.
8. Click on **Preview** to check drawing before plotting (Press Esc to exit).
9. When satisfied, click **OK**.
10. Autocad will ask where to save the Plot file. Choose, then click **Save**.

The Plot file has been created.



You can supply your files on disk and CD or email us direct at
copyshop@macaulayscott.co.uk

HOW TO PROVIDE A PLOT FILE

Setting up the printer in Autocad 2000/02 & LT

1. Launch AutoCAD 2000/02.
2. In the menu, choose **FILE**.
3. Choose the **PLOTTER MANAGER** option.
4. Double click on the **ADD-A-PLOTTER WIZARD**.
5. Follow the instructions on the screen.
6. Click on **NEXT**.
7. Select **MY COMPUTER** to install the driver on your local PC.
8. Click on **NEXT**.
9. Select **OCE** in the list of manufacturers.
10. Select the printer model you want to install - **9400 LV.4x**
11. Click on **NEXT**.
12. Click on **NEXT** again.
13. Select the printer port - **PLOT TO FILE**.
14. Click on **NEXT**.
16. Click on **NEXT** again.
17. Click on **FINISH**.

Note: Your driver is now installed and a new icon will appear in the same window as the Add-A-Plotter Wizard.

18. Double click on the new **OCE 9400 LV_4.x.pc3** icon.
19. Click on **DEVICE & DOCUMENT SETTINGS** tab.
20. In the main window click on **CUSTOM PROPERTIES**.
21. Under ACCESS CUSTOM DIALOGUE, click on **CUSTOM PROPERTIES**.
22. On NUMBER OF ROLLS click on **2**.
23. Click **OK**. The custom settings window pops up.
24. Click on **CUTTING METHOD <plot size>**. Change it to **STANDARD SIZE**.
25. Click **OK**.
26. Click **OK**.
27. You are back at the Plotter Manager window.
Close this window, select **FILE** then **CLOSE**.

Continued Overleaf.

Producing the PLT file.

1. Click on **FILE**.
2. Click on **PLOT**.
3. Select **Oce 9400 LV_4.x.pc3** as the plot device.
4. Ensure **PLOT TO FILE** is ticked and the location is set as 3.5" Floppy
5. Set the pen assignments to **monochrome.ctb**
6. Click on the **PLOT SETTINGS** tab.
7. Adjust the plot settings for your drawing ie. scale, paper size and plot area.
8. Under **Plot Offset** check **CENTRE THE PLOT**.
6. Do a **FULL PREVIEW**. (Press **Esc** to exit full preview)
7. When satisfied click **OK**.
8. The PLT file will save to your floppy disk.

Setting up the printer in Autocad 13/14/LT97

1. Under **FILE** select **PRINTER SETUP**.
2. Click on **NEW** and select **OCE ADI 4.3 driver**.
3. Call the description "**9400**" or "**Macaulay Scott**" then click **OK**.
3. You will now be asked to choose from a set of options...
The items in brackets are what to type in AUTOCAD LT

When asked what printer - **9400** (12)
Units set to - **MM** (0)
Is there a second roll? - **Yes** (Y)
Specify port - **Parallel port** (P)
Name port - **file**
4. Press **ENTER**, if a box pops up click **OK**.

Producing the PLT file

1. Under **FILE** select **PRINT**.
2. Select **9400** or **Macaulay Scott**.
3. Tick **PLOT TO FILE**.
4. Click **FILE NAME** and choose 3.5"floppy then **SAVE**.
5. Modify any other options specific to your drawing ie. pen settings, paper size etc.
6. It is always useful to look at a **FULL PREVIEW** before finishing.
7. When satisfied click **OK**.
8. The PLT file will save to your floppy disk.

You can supply your files on disk and CD or email us direct at
copyshop@macaulayscott.co.uk